

- Transparent sealing  
Sellado transparente
- Top layer with DURA STONE® Flooring mix  
Capa superior con mezcla de pisos DURA STONE®
- Compensation layer / filler X  
Capa de compensación / carga X
- Primer  
Imprimación
- Concrete base  
Superficie de hormigón

Floor design of a decorative SL coating with DURA STONE® Flooring

Estructura del piso de un revestimiento decorativo autoajustable con pisos DURA STONE®

**1. Surface preparation**

Depending on the quality and condition of the substrate.

**1. Preparación de la superficie**

Independientemente de las características y del estado de la superficie.

**2. Primer**

Priming of the surface with clear primer resin for an excellent bonding to the existing substrate. Consumption: according to manufacturer's specifications.

**2. Imprimación**

Imprimación de la superficie con resina de imprimación clara para la adherencia a la superficie existente. Consumo: según las instrucciones del fabricante.

**3. Leveling layer with SL coating**

It is recommended to use a DORSIMIX® Filler X with clear resin, or a pre-filled resin suitable for self-leveling coatings. Filler consumption: approx. 3 - 3.5 kg/m² (with a 2 mm layer thickness).

**3. Capa de igualación con un revestimiento autoajustable**

Se recomienda la preparación con un carga X DORSIMIX® con resina clara o una resina precargado, adecuada para revestimientos autoajustables.

**4. Decorative SL coating with DURA STONE® Flooring**

Only suitable EP resins which have been tested and approved by the system manufacturer are authorized for use. The mixing ratio of binder to filler depends on the resin system used, and will normally vary between 1:1.5 and 1:1.7. More details can also be determined by application tests. Filler consumption: approx. 3.5 kg/m² (with a 2 mm layer thickness).

**4. Revestimiento decorativo autoajustable con pisos DURA STONE®**

Se deben utilizar exclusivamente resinas epoxi adecuadas, probadas y habilitadas por el fabricante. La proporción de mezcla entre aglutinante y carga depende del aglutinante utilizado y suele estar entre 1:1,5 y 1:1,7. Para una mayor exactitud se deben realizar pruebas prácticas de aplicación. Consumo de carga: 3,5 kg/m² aprox. (con una capa de 2 mm de espesor).

**5. Transparent sealing**

It is recommended to apply an additional seal, in order to make the floor more resistant to scratching loads. Please observe the system manufacturer's recommendations.

**5. Sellado transparente**

Para hacer que el piso sea más resistente ante arañazos, se recomienda un sellado adicional con base de PU. Siga las recomendaciones del fabricante.

**CAUTION**

DURA STONE® Flooring is a colored plastic granulate. Slight color variations between individual production batches or pallets are therefore possible. If you process material from different batches, we recommend mixing the different batches. Make sure to conduct a general processing. Avoid excessive shear forces.

**ATENCIÓN**

Los pisos DURA STONE® son granulados de plástico tintados. Se pueden producir pequeñas diferencias de colores entre cada uno de los lotes de producción y/o las variedades. Si utiliza material de diferentes lotes, le recomendamos mezclar los diferentes lotes. Haga la mezcla con cuidado. Evite las grandes fuerzas de corte.



The DURA STONE® Flooring standard mixtures provide the matching color variant for virtually any purpose.

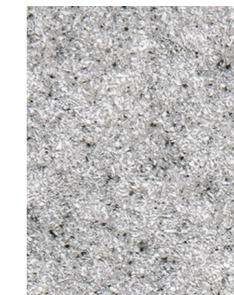
Las mezclas estándar de pisos DURA STONE® ofrecen la combinación de colores más ajustada a cada uso.



DF123 Desert  
Beis



DF104 Classic  
Gris Claro



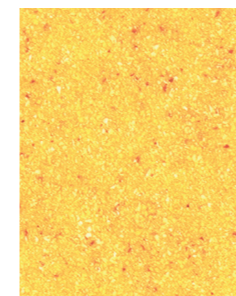
DF105 Hierro  
Gris Medio



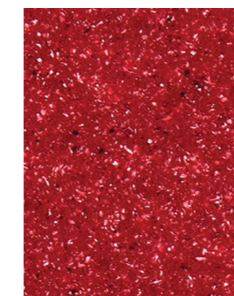
DF106 Beach Sand  
Arena



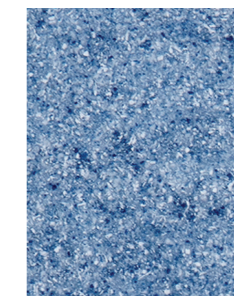
DF108 Apple Green  
Verde Manzana



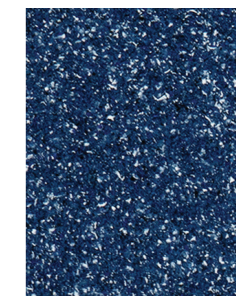
DF124 Peach  
Melocotón



DF107 Royal Red  
Rojo Real



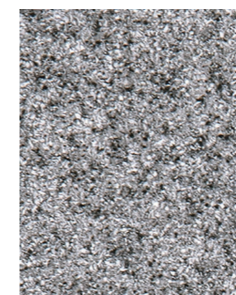
DF103 Light Blue  
Azul Claro



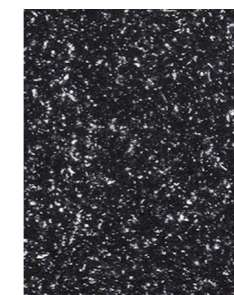
DF122 North Sea  
Azul Oscuro



DF121 Cinnamon  
Canela



DF102 Contrast  
Antracita



DF101 Black/White  
Negro/Blanco



DF109 Vanilla Bean  
Vanilla



DF110 Amber  
Ámbar



DF111 Raspberry  
Frambuesa



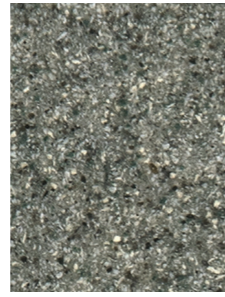
DF112 Sandbar  
Sandbar



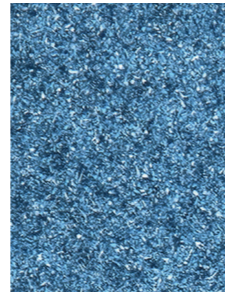
DF113 Sesame  
Sésamo



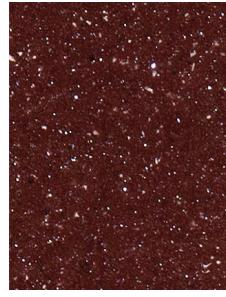
DF114 Black Cherry  
Cereza



DF115 Sage  
Sage



DF116 Carribean  
Caribe



DF117 Plum Dandy  
Ciruela



DF118 Birch  
Birch



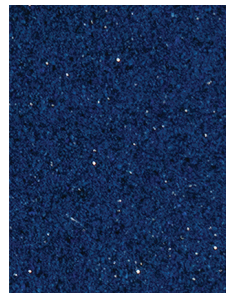
DF119 Deep Brown  
Marrón



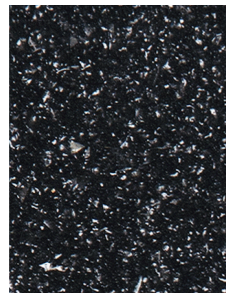
DF120 Nut Meg  
Moscada



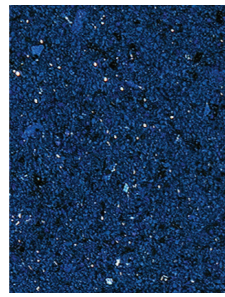
DF125 Mahagony  
Caoba



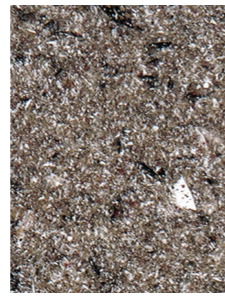
DF126 Royal Blue  
Azul Royal



DF127 Galaxy  
Galaxia



DF128 Deep Blue  
Azul oscuro



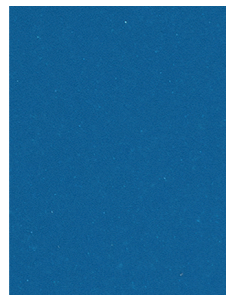
DF129 Gravel  
Grava



DF130 Yellow  
Amarillo



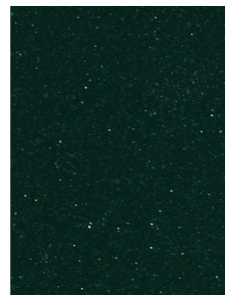
DF131 Red  
Rojo



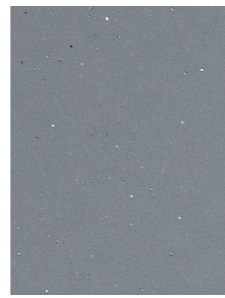
DF132 Teal  
Verde Azulado



DF133 Purple  
Morado



DF134 Green  
Verde



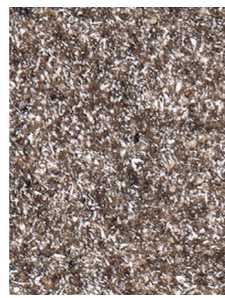
DF135 Gray  
Gris



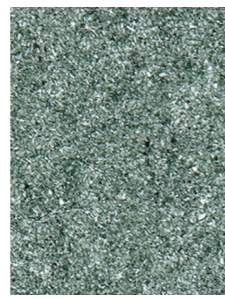
DF136 Light Gray  
Gris claro



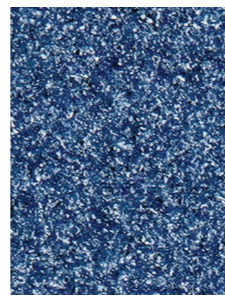
DF137 Dogwood  
Dogwood



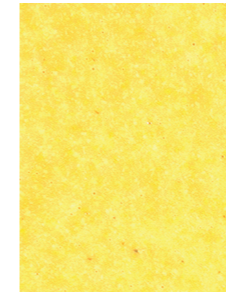
DF138 Sandstone  
Arena



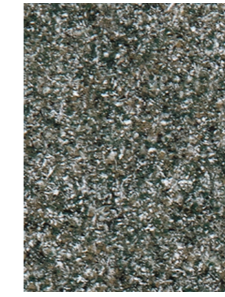
DF139 Wintergreen  
Gaulteria



DF140 New River  
Rio nuevo



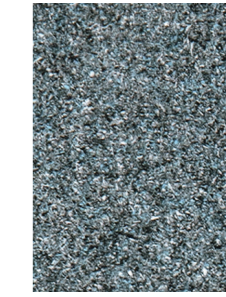
DF141 Pineapple  
Piña



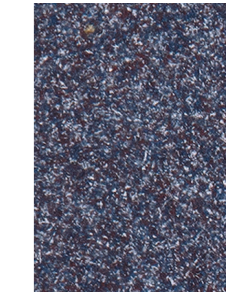
DF142 Riverbank  
Orilla de Rio



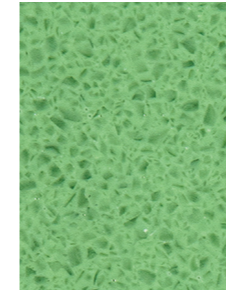
DF143 Tuscan Sun  
Sol toscano



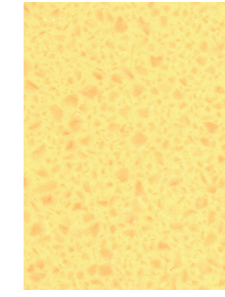
DF144 Tahoe  
Tahoe



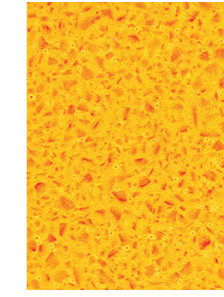
DF145 Mystic River  
Rio mistico



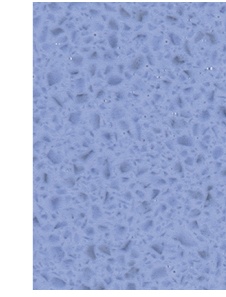
DF146 Irish Spring  
Primavera Irlandesa



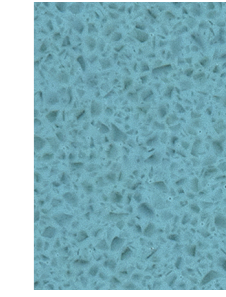
DF147 Buttercream  
Mantequilla



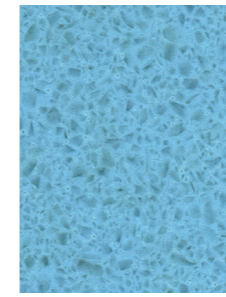
DF148 Sherbert  
Sorbete



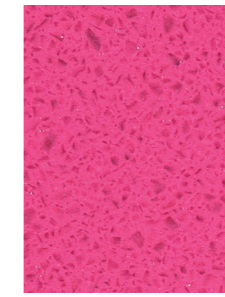
DF149 Periwinkle  
Bígaro



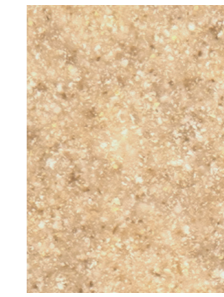
DF150 Sea Foam  
Espuma de mar



DF151 Misty Blue  
Azul místico



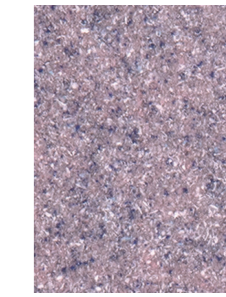
DF152 Congo Pink  
Rosado



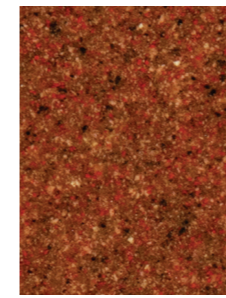
DF153 Sandy  
Arenoso



DF154 Moondust  
Polvo de Luna



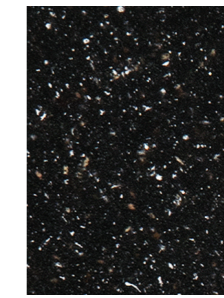
DF155 Thistle  
Cardo



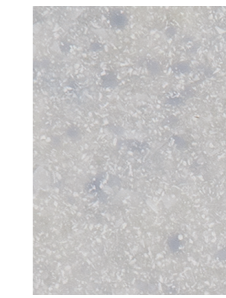
DF156 Gingerbread  
Jengibre



DF157 Flamingo  
Flamingo



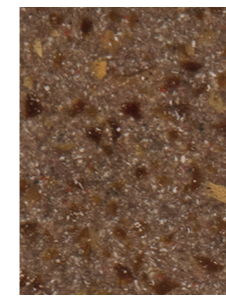
DF158 Milky Way  
Milky way



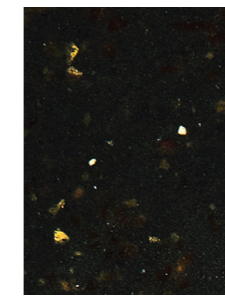
DF159 Gulf Coast  
Costa del Golfo



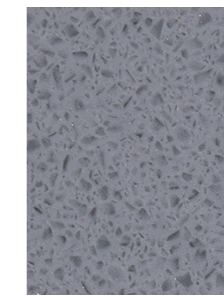
DF160 Arctic Ice  
Hielo del Artico



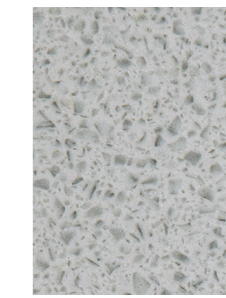
DF161 Hazelnut  
Avellana



DF162 Chicory  
Achicoria



DF163 Classic Gray  
Gris clasico



DF164 New Gale Gray  
Nuevo Gale Gray



DF165 Cork  
Corcho

The colors depicted may deviate from the finished product.

Pueden existir diferencias con los colores de las imágenes.